

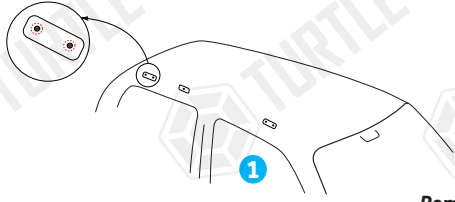


## FIRST TIME INSTALLATION

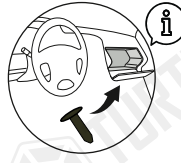
- \* REMOVE PARTS FROM INSIDE THE PACKAGE AND CHECK THEM ALL
- \* CONTACT YOUR DEALER IF ANY PART IS MISSING OR DAMAGED
- \* USE THE EQUIPMENT SPECIFIED FOR INSTALLATION

### ASSEMBLY INSTRUCTIONS (ROOF RACK)

Product Code: MC03014 (Turtle Air3 Kit)



Belirtilen parçaları sökünüz ve saklayınız.  
Remove and keep the specified parts.



Turtle Air3 ürününüzü montaj yapmak istediğiniz yere göre (Ön-Orta, Ön-Arka, Orta-Arka) plastikleri sökünüz.  
**Remove the plastics according to where you want to mount your Turtle Air3 (Front-Middle, Front-Back, Middle-Back).**

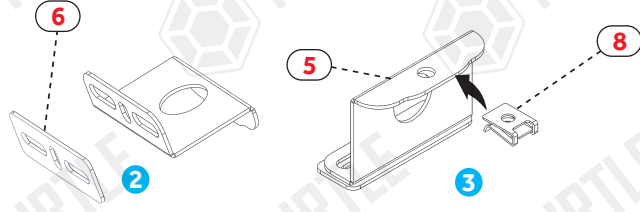
### PACKAGE INCLUDED

1-	3001 CHASSIS	4
2-	NO 5 ALLEN WRENCH	1
3-	CLOTH KEYCHAIN	1
4-	C7	4
5-	C6	2
6-	C03013 SPONGE BAND	4
7-	6x15 FLANGED BUTTON HEAD BOLT	8
8-	M6 SPEEDNUT	4
9-	M6x30 INBUS BOLT	4
10-	M6 1/2 WASHER	4
11-	M6 WASHER	2
12-	NO 4 ALLEN WRENCH	1

ZIPLOCK BAG

C6 Bracket Montajı (Orta bağlantı için kullanılacaktır.)

#### C6 Bracket Installation (It will be used for the middle connection.)

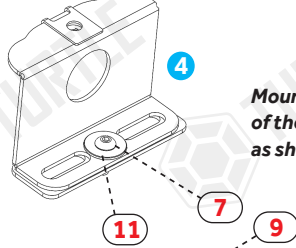


C03013 süngeri bracketlere şekildeki gibi yapıştırınız  
**Stick the C03013 sponge to the brackets as shown in the figure.**

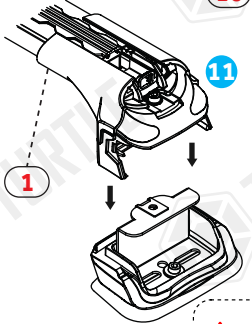
M6 klipsi metal parçada belirtilen yere takınız.  
**Attach the M6 clip to the place indicated on the metal part.**

Metal bracketi şekilde gösterildiği gibi aracın tavanına civata kullanarak monte ediniz.

**Mount the metal bracket to the roof of the vehicle using bolts as shown in the figure.**

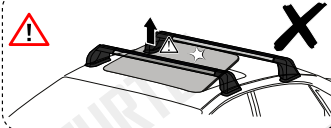


M6x30 inbus civata ve küçük pulu Air3 şasi üzerinde ilgili yere yerleştiriniz  
**Place the M6x30 inbus bolt and small washer on the Air3 chassis in the place specified**



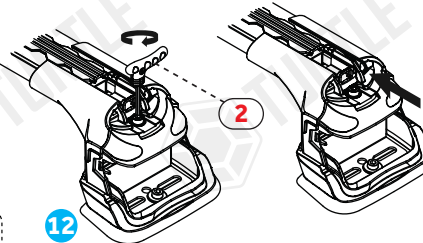
Turtle® ara atkılarını araç tavanına yerleştirip metal aparatlara sabitleyiniz.

**Place Turtle® roof racks on the vehicle roof and fix them to the metal apparatus.**



Pul ve civata kullanarak ara atkılarını sabitleyiniz.  
**Fasten roof racks using washers and bolts**

**Attach Air3 chassis kits to the profile.**



C03013 süngeri bracketlere şekildeki gibi yapıştırınız  
**Stick the C03013 sponge to the brackets as shown in the figure.**

**Mount the metal bracket to the roof of the vehicle using bolts as shown in the figure.**

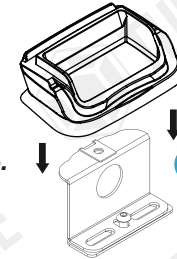
M6 klipsi metal parçada belirtilen yere takınız.  
**Attach the M6 clip to the place indicated on the metal part.**

Metal bracketi şekilde gösterildiği gibi aracın tavanına civata kullanarak monte ediniz.

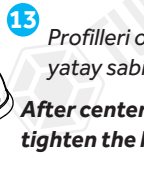
**Mount the metal bracket to the roof of the vehicle using bolts as shown in the figure.**

Contayı gösterildiği şekilde metal parçanın üzerinden geçirip tavana yerleştiriniz.

**Pass the rubber over the metal bracket as shown and place vehicle's roof.**



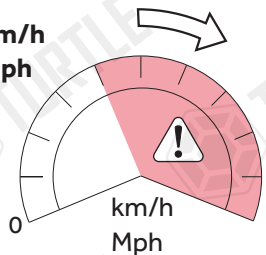
Profilleri ortaldıktan sonra yatay sabitleme civatalarını sıkınız  
**After centering the profiles, tighten the horizontal fixing bolts**



**Max. Load 75 kg**



**80 km/h  
50 Mph**



\* Kullanım amacı; Aracın bagajı yeterli olmadığı durumlarda araç tavanında yük ve eşya taşımak.  
**\* Purpose of usage; Carrying cargo and goods on the vehicle's roof when the vehicle's trunk is not sufficient.**