



## FIRST TIME INSTALLATION

- \* REMOVE PARTS FROM INSIDE THE PACKAGE AND CHECK THEM ALL
- \* CONTACT YOUR DEALER IF ANY PART IS MISSING OR DAMAGED
- \* USE THE EQUIPMENT SPECIFIED FOR INSTALLATION

### ASSEMBLY INSTRUCTIONS (ROOF RAIL)

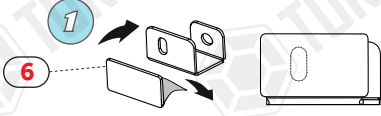
Product Code: MR01073 (Crown)

### COMPATIBLE VEHICLES

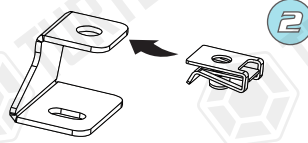
FRD B-MX (B232) MPV 12-17

### PACKAGE INCLUDED

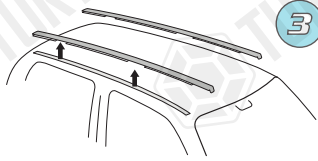
1- CROWN STOPPLE	4
2- M6x30 INBUS BOLT (5Nm)	4
3- D6 WASHER	8
4- M6x15 INBUS BOLT (5Nm)	4
5- M6 SPEED NUT	4
6- C01006 SPONGE BAND	4
7- 5mm ALLEN KEY	1
8- <b>YMT-R01020L-CO (BRACKET)</b>	2
9- <b>YMT-R01020R-CO (BRACKET)</b>	2
10- <b>LIQUID RUBBER</b>	1



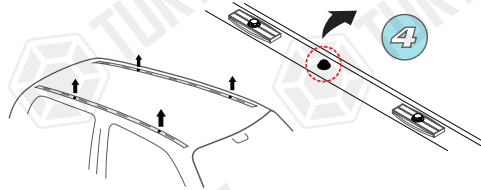
Sünger bandı metal parçaya yapıştırınız ve civata deliğine denk gelen kısmı kesiniz.  
**Stick the sponge tape to the metal part and cut the place corresponding to the bolt hole.**



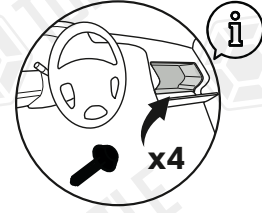
M6 klipsi metal parçada belirtilen yere takınız.  
**Attach the M6 clip to the place indicated on the metal part.**



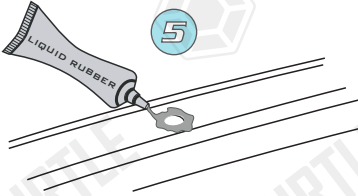
Tavandaki plastikleri sökünüz.  
**Remove the plastics from vehicle's roof.**



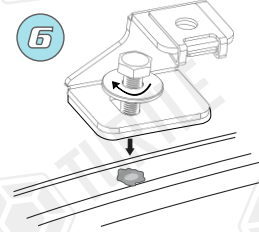
Belirtilen parçaları sökünüz.  
**Dismantle the specified parts.**



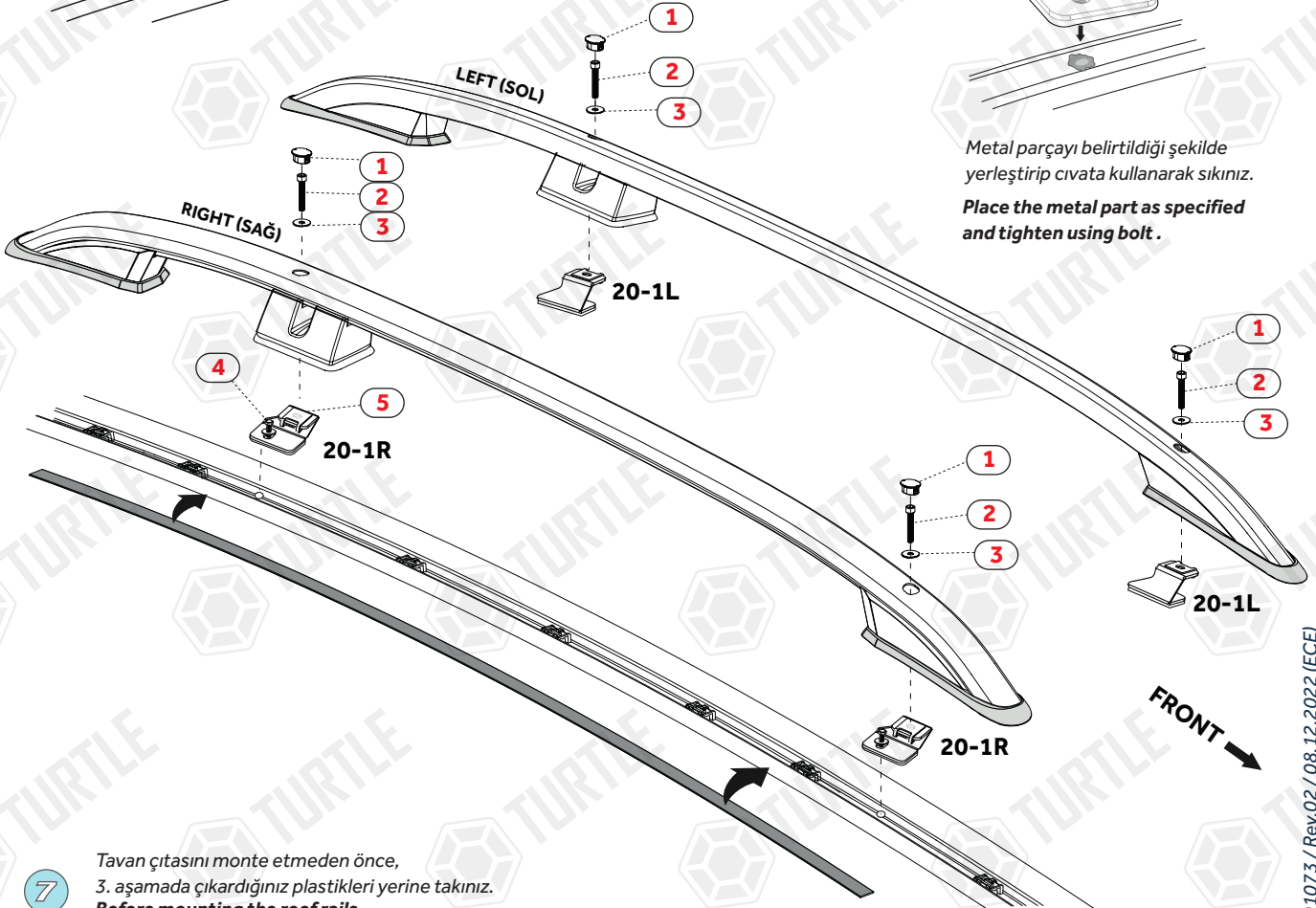
Belirtilen parçaları sökünüz ve saklayınız.  
**Remove and keep the specified parts.**



Yalıtım için silikonu yuvanın etrafına bol miktardan sıkınız. Uygulamayı 3dk içerisinde kurumadan tamamlayınız.  
**Apply a thick layer of silicone around the hole for insulation.**  
**Apply in 3min before silicone dry.**



Metal parçayı belirttiği şekilde yerleştirip civata kullanarak sıkınız.  
**Place the metal part as specified and tighten using bolt.**



7 Tavan çitasını monte etmeden önce, 3. aşamada çıkardığınız plastikleri yerine takınız.  
**Before mounting the roof rails, reattach the plastics you removed in step 3.**

MR01073 / Rev.02 / 08.12.2022 (ECE)